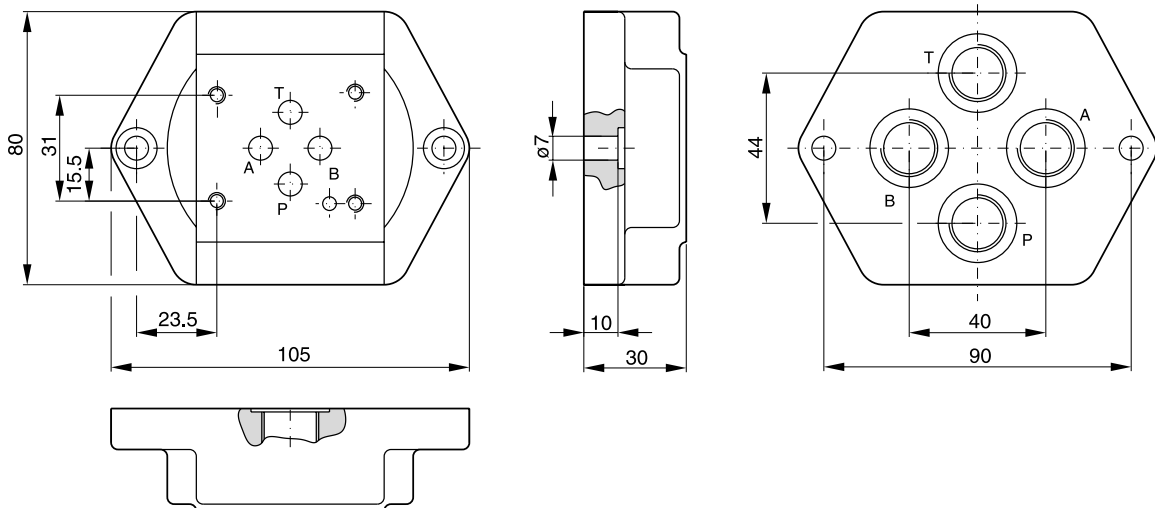
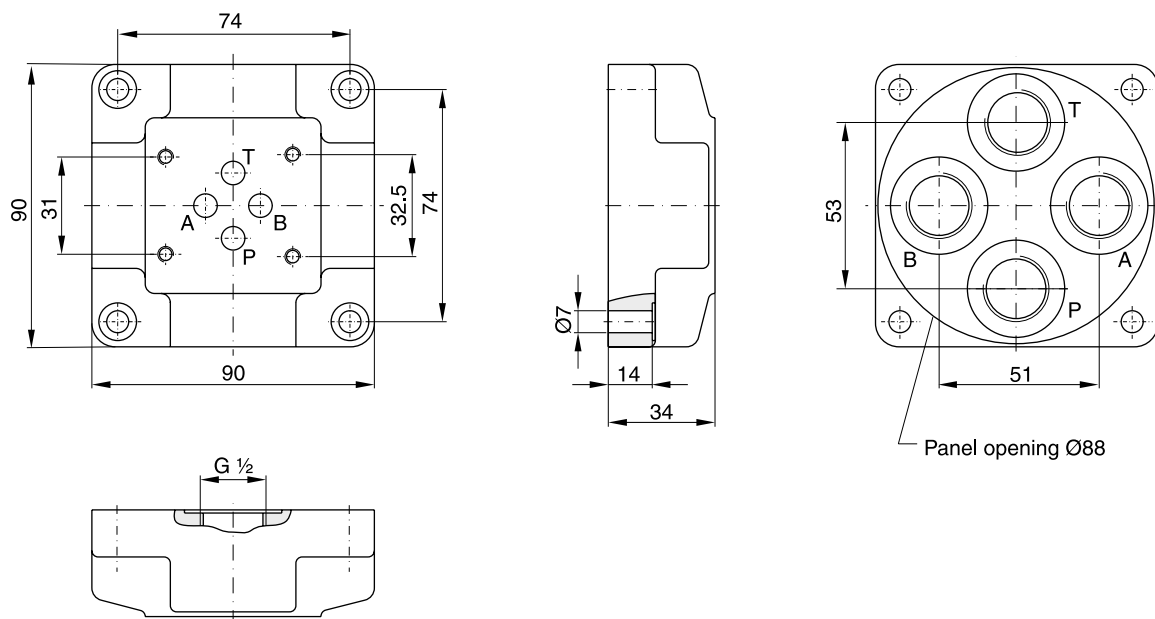


**Valve size DIN NG06, CETOP 03, NFPA D03**



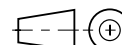
Ordering code	
<b>SPD 22 B 910</b>	P, A, B and T = G 1/4
<b>SPD 23 B 910</b>	P, A, B and T = G 3/8

**Valve size DIN NG06, CETOP 03, NFPA D03**



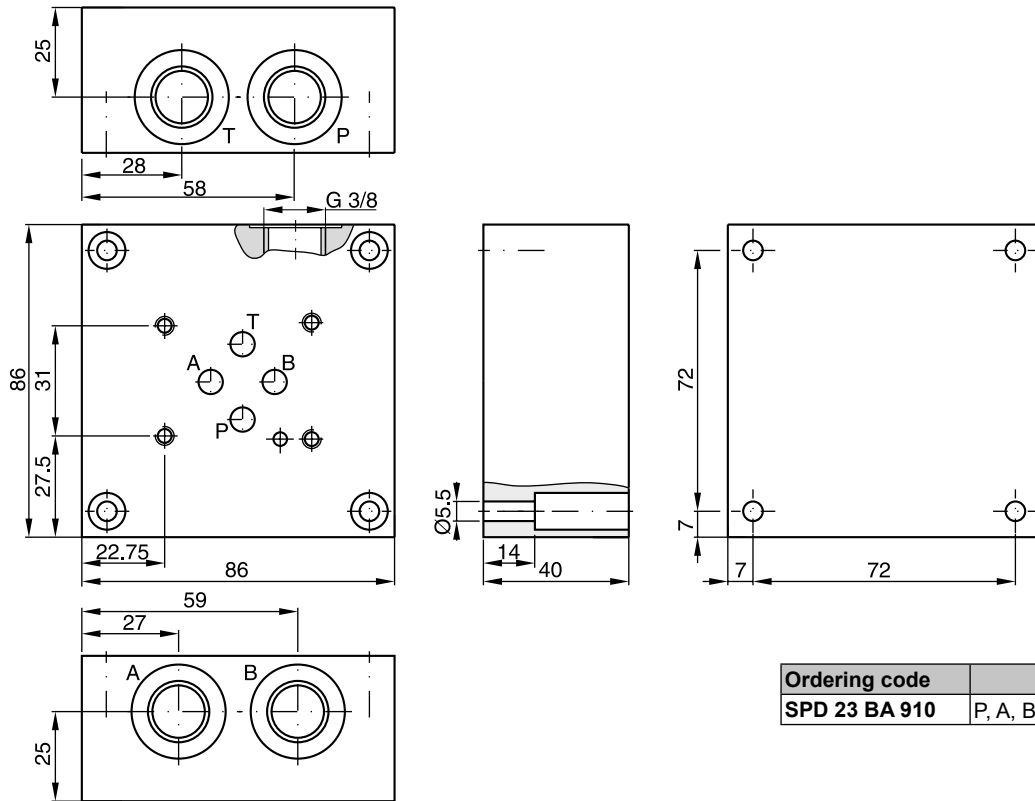
Ordering code	
<b>SPD 24 B 910</b>	P, A, B and T = G 1/2

**Bold letters =**  
**Short-term availability**

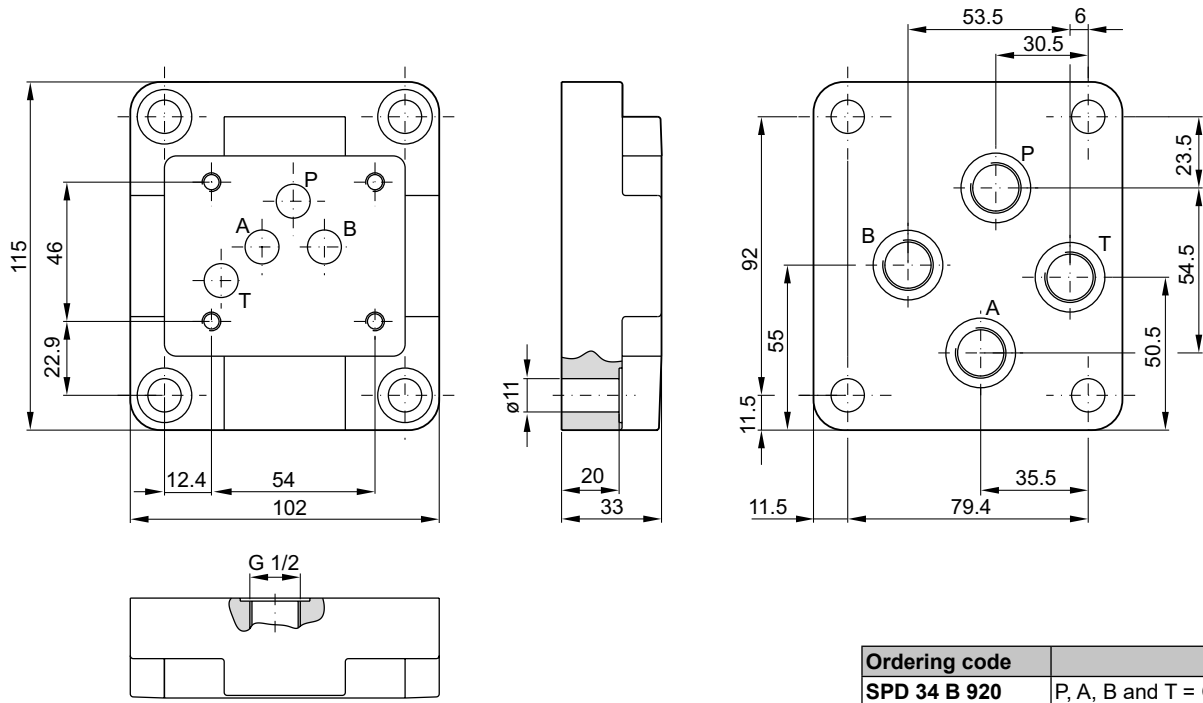


12

**Valve size DIN NG06, CETOP 03, NFPA D03**



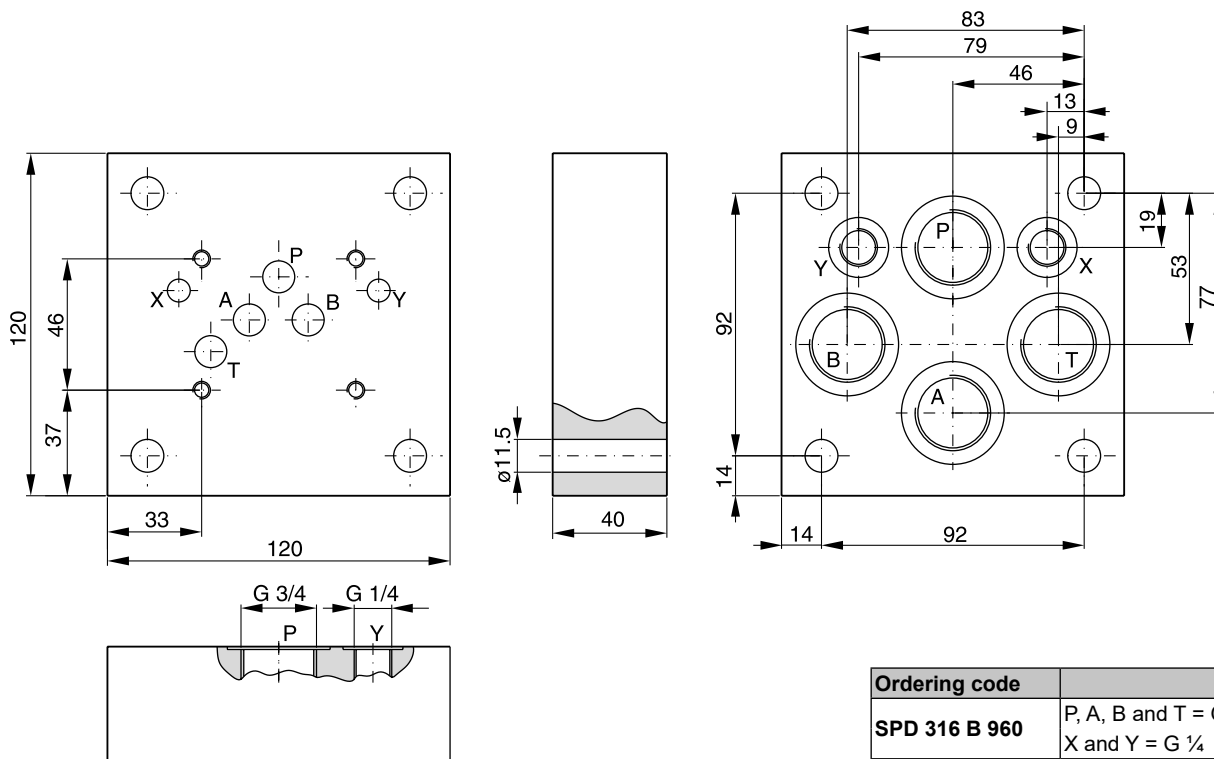
**Valve size DIN NG10, CETOP 05, NFPA D05**



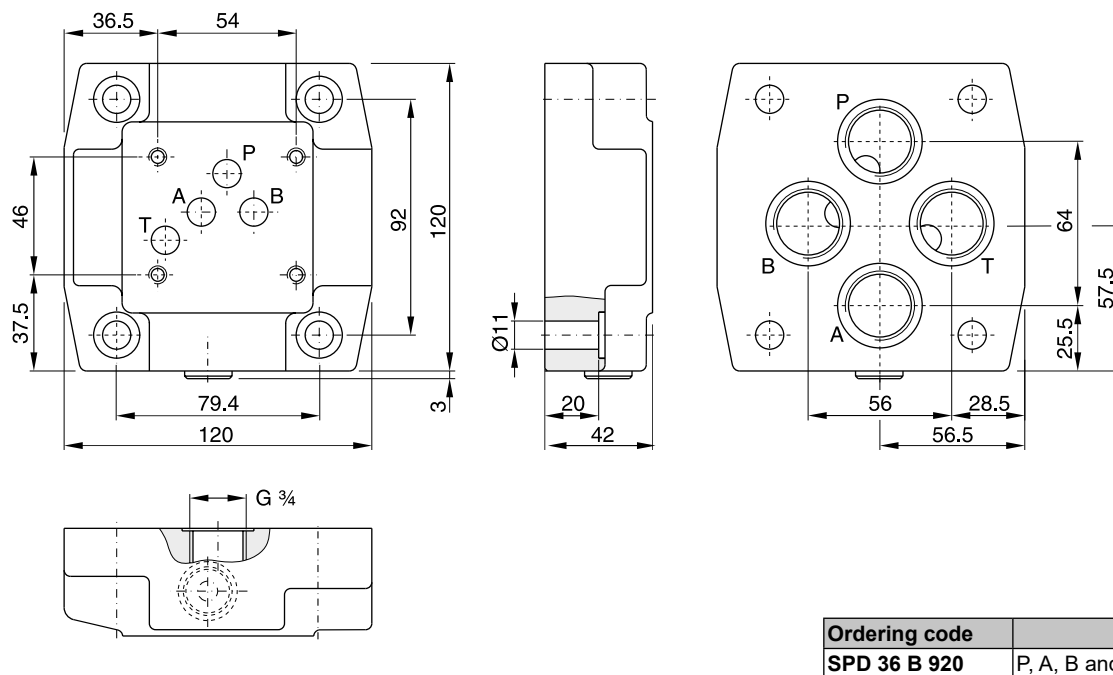
**Bold letters =**  
 Short-term availability



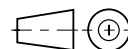
Valve size DIN NG10, CETOP 05, NFPA D05



Valve size DIN NG10, CETOP 05, NFPA D05

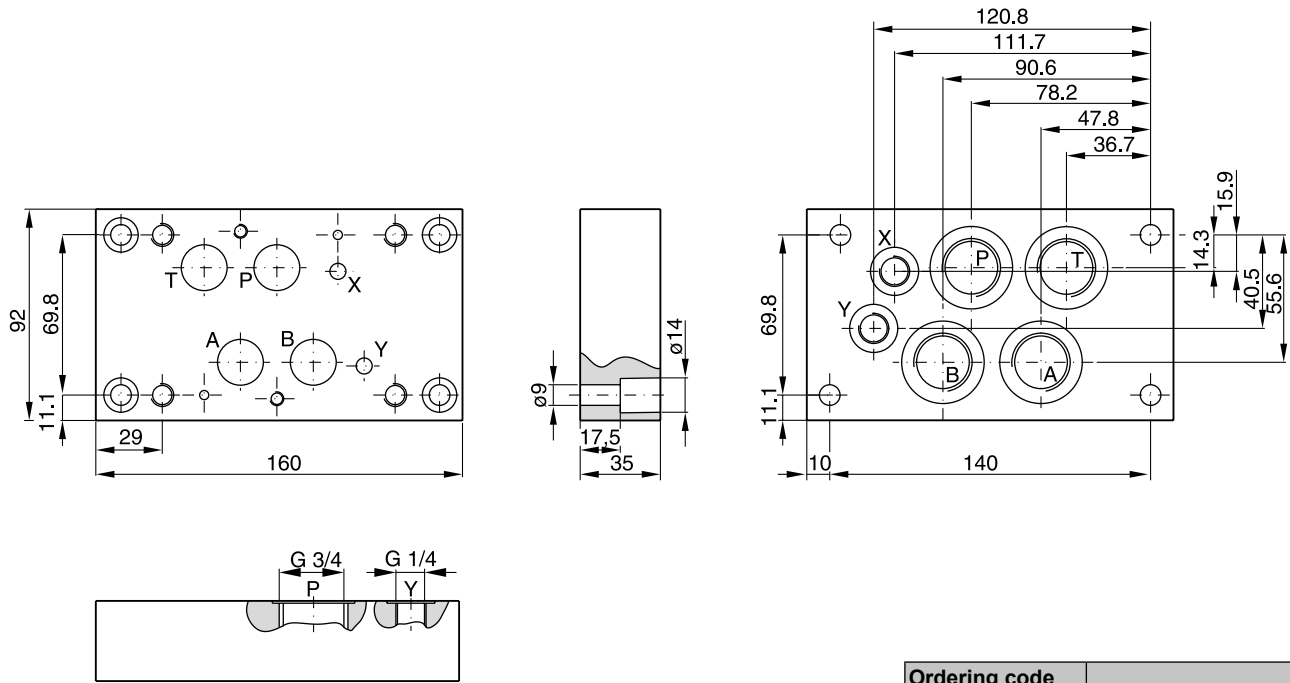


**Bold letters =**  
 Short-term availability



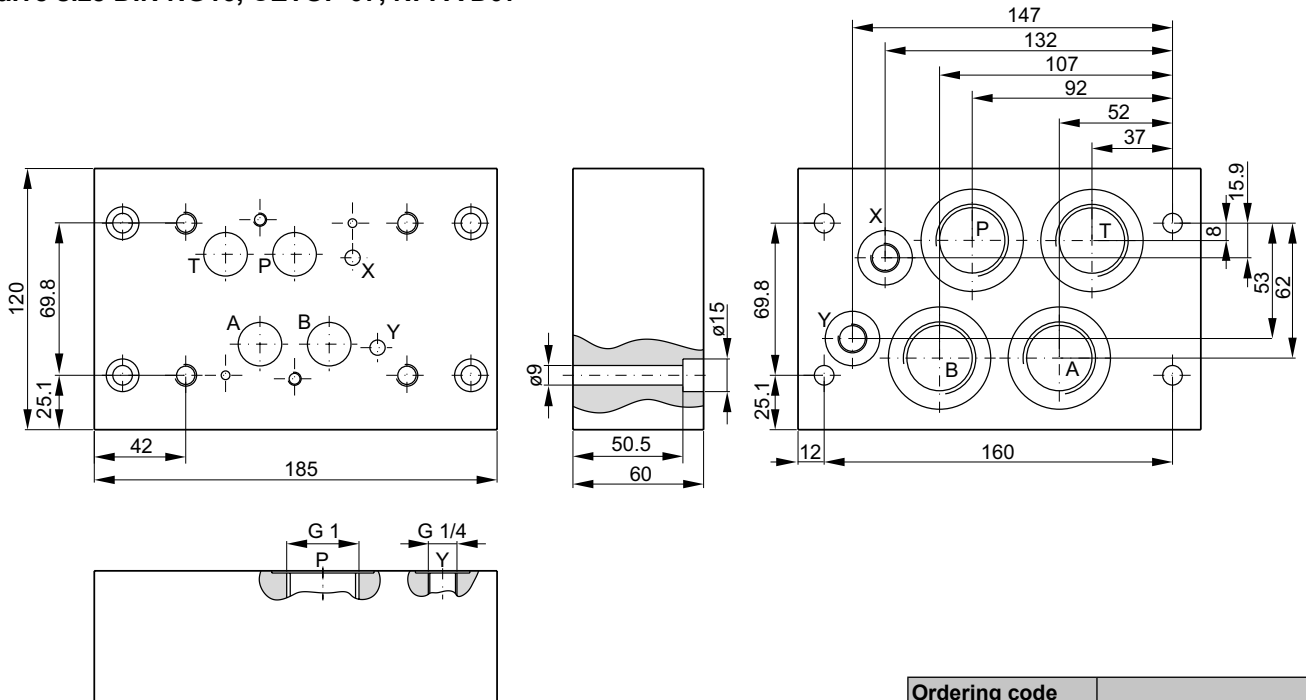
12

**Valve size DIN NG16, CETOP 07, NFPA D07**



Ordering code	
<b>SPD 46 B 910</b>	P, A, B and T = G 3/4 X and Y = G 1/4

**Valve size DIN NG16, CETOP 07, NFPA D07**



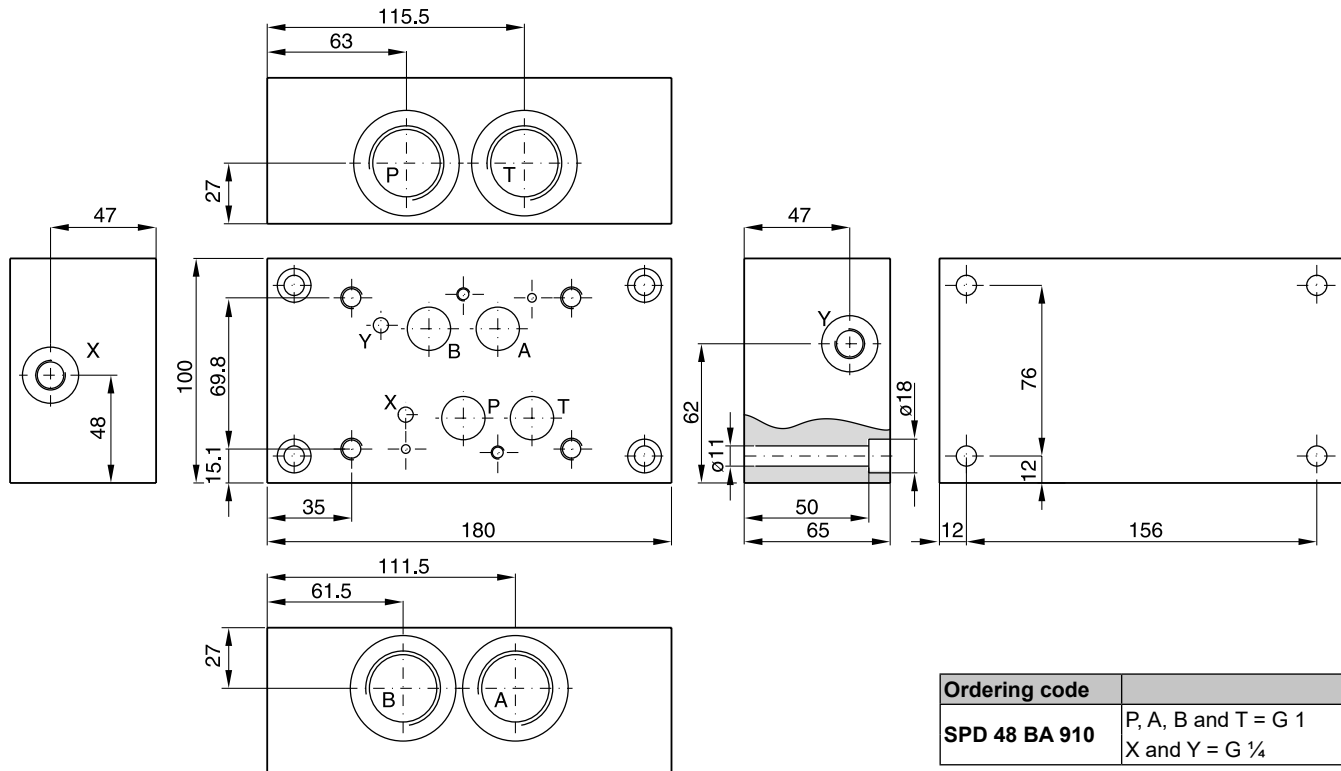
Ordering code	
<b>SPD 48 B 910</b>	P, A, B and T = G 1 X and Y = G 1/4

**Bold letters =**  
Short-term availability

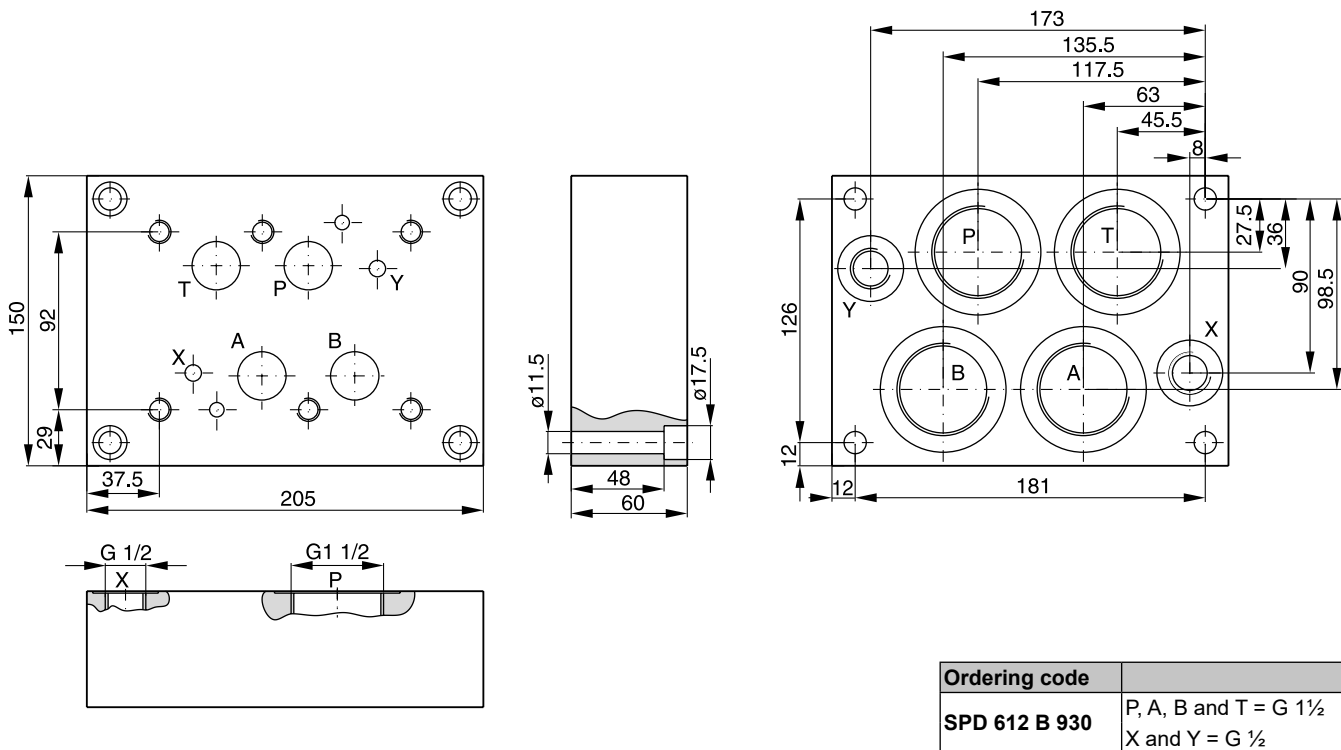


**12**

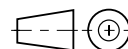
**Valve size DIN NG16, CETOP 07, NFPA D07**



**Valve size DIN NG25, CETOP 08, NFPA D08**



**Bold letters =**  
**Short-term availability**



12